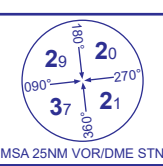


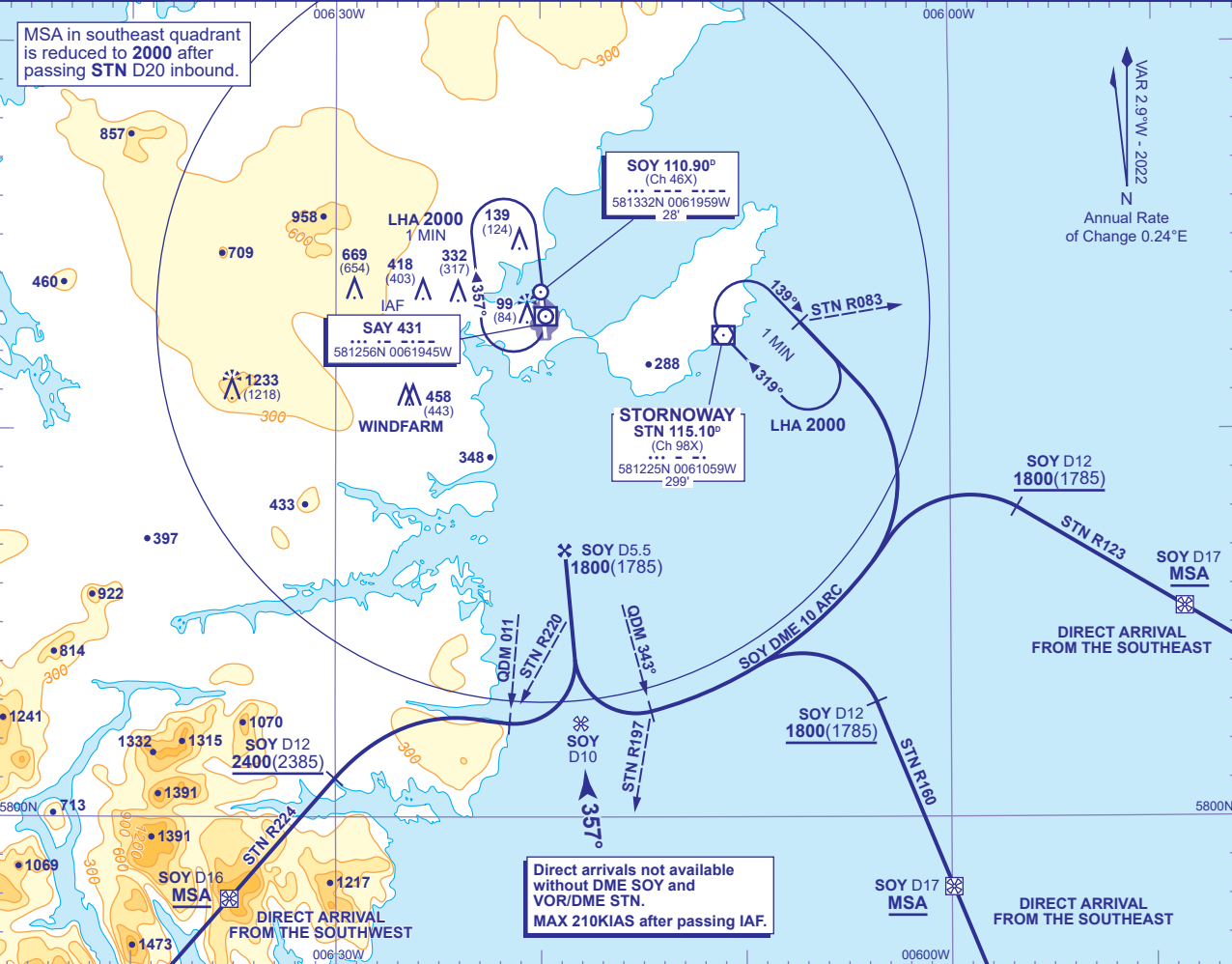
INSTRUMENT APPROACH CHART - ICAO

STORNOWAY
DIRECT ARRIVALS
to LOC and NDB(L)
RWY 36
(ACFT CAT A,B,C,D)



APP	119.480	STORNOWAY APPROACH	AD ELEVATION	26
TWR	119.480	STORNOWAY TOWER	THR ELEVATION	15
AFIS	119.480	STORNOWAY INFORMATION	OBSTACLE ELEVATION	1233 AMSL (1218) (ABOVE THR)
ATIS	115.100	STORNOWAY INFORMATION	BEARINGS ARE MAGNETIC	

TRANSITION ALTITUDE
3000



INITIAL APPROACH FROM VOR/DME STN (Subject to ATC approval)
Arrival **not below MSA**. Overhead VOR/DME STN (IAF) at **3000** or as directed (lowest altitude to start procedure from hold is **2000**). Fly outbound in the hold. After passing VOR STN R083, turn right onto SOY D10 arc clockwise descending along the arc to **1800**(1785). From NDB(L) SAY QDM 343° (VOR STN R197) turn right onto LOC/extended FAT. When established continue with appropriate procedure.

DIRECT ARRIVAL FROM SOUTHEAST (Subject to ATC approval)
Arrival on VOR STN R160 (QDM 340°) **not below MSA**. After passing SOY D17 (IAF) descend **not below 1800**. From SOY D12 turn left onto SOY D10 arc clockwise. From NDB(L) SAY QDM 343° (VOR STN R197) turn right onto LOC/extended FAT. When established continue with appropriate procedure.

DIRECT ARRIVAL FROM SOUTHWEST (Subject to ATC approval)
Arrival on VOR STN R224 (QDM 044°) **not below MSA**. After passing SOY D16 (IAF) descend **not below 2400**. From SOY D12 turn right onto SOY D10 arc anticlockwise and descend to **1800**. From NDB(L) SAY QDM 011° (VOR STN R220) turn left onto LOC/extended FAT. When established continue with appropriate procedure.

DIRECT ARRIVAL FROM SOUTHWEST (Subject to ATC approval)
Arrival on VOR STN R224 (QDM 044°) **not below MSA**. After passing SOY D16 (IAF) descend **not below 2400**. From SOY D12 turn right onto SOY D10 arc anticlockwise and descend to **1800**. From NDB(L) SAY QDM 011° (VOR STN R220) turn left onto LOC/extended FAT. When established continue with appropriate procedure.

CHANGE (5/23): VOR STN RECALIBRATION.